

Advancing Science and Discovery Since 1905

Economic Geology

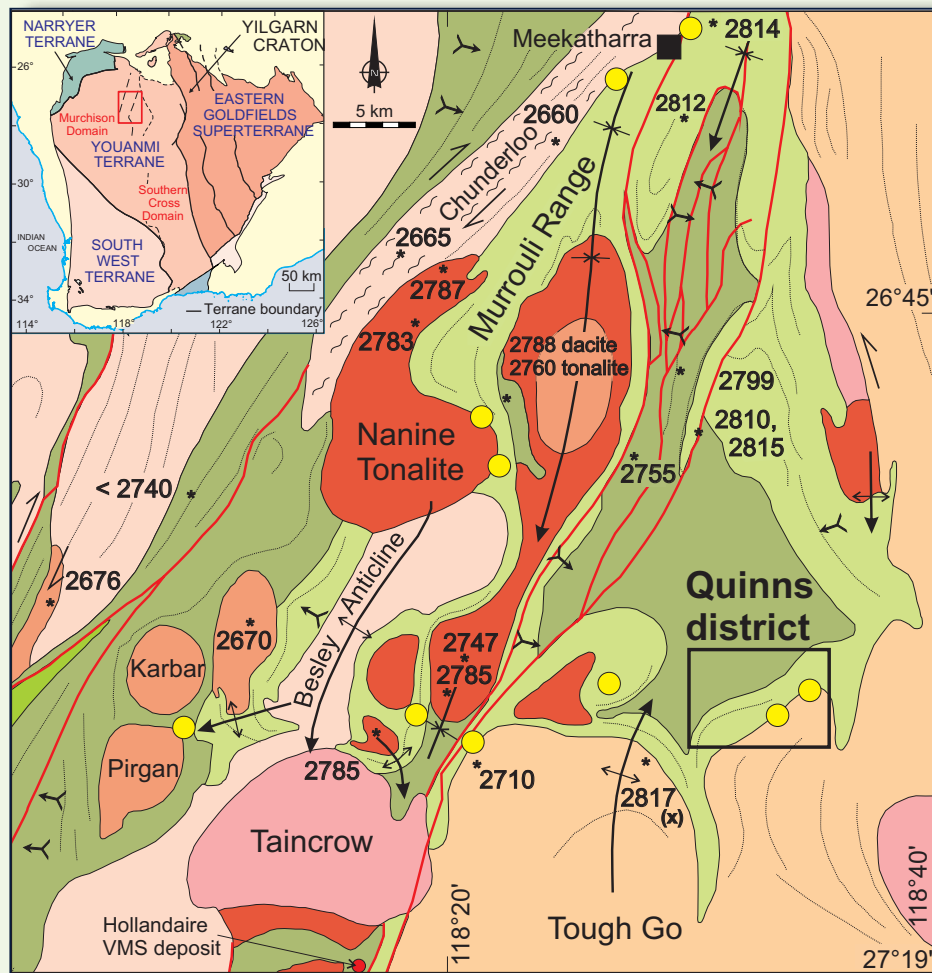
BULLETIN OF
THE SOCIETY
OF ECONOMIC
GEOLOGISTS



SEPTEMBER-OCTOBER 2016

VOLUME 111 / NUMBER 6

NORTHERN MURCHISON DOMAIN, WESTERN AUSTRALIA



IN THIS ISSUE

- Pyrite, St. Ives Au District, Western Australia
- Cariboo Au District, British Columbia
- Early Mineralization at Cerro de Pasco, Peru
- Hongniu-Hongshan Cu Skarn Deposit, China
- Apatite as Indicator Mineral for Porphyry Cu
- VMS Mineralization, Quinns District, Western Australia
- Wolverine VMS Deposit, Yukon, Canada
- Poyi Ni-Cu Sulfide Deposit, Western China
- Biogeochemical Weathering of Au Ore
- Ming VMS Deposit, Newfoundland, Canada
- Interspinifex Ni Ore, Kambalda, Australia